



FILTER-LAB® Quantitative filter paper

Ref. 1244

Code: PN1244320

Circles of 320 mm. diameter

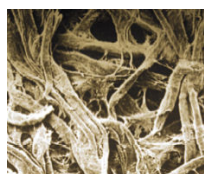
box 100 units.



Filtration catalog: pages 16, 17, 18, 19.

SPECIAL APPLICATIONS

- Filtration of fine or semicollodial particles
- Analysis of insoluble particles in oils and animal or vegetal fats
- Filtration of hot precipitates: $BaSO_4$, Cu_2O , ZnS , NiS , $SrSO_4$, $HgCr_4$, etc.
- Determination of the content in soluble sulfates in soils
- Lixiviation Analysis
- Filtration of samples before photometry or colorimetry valorations



TECHNICAL SPECIFICATIONS

Reference	1244
Code	PN1244320
Size	320 mm.
Format	Flat disk
Presentation	Box of 100 units
Grammage (EN 536)	80 gr./m ²
Thickness (EN 20534)	0,160 mm.
Content in ashes (DIN 53137)	< 0,01%
Pore	2 - 4 µm
Filtration	Slow
Filtration speed (DIN 53137)	180 s
Burst resistance (ISO 2758)	> 20 kPa
Composition	Pure cellulose
Type of filter	Depth

Related products



FILTER-LAB® Quantitative filter papers

Made with linters of cotton, they have followed a process of wash to obtain a content in ashes low than 0,01%

Technical specifications

Ref.	Filtration	Weight in grams g/m ²	Thickness mm	Pore µm	Ash %
1235	Very quick	80	0.210	25 - 30	< 0.01
1238	Quick	80	0.180	20 - 25	< 0.01
1240	Medium	80	0.170	14 - 18	< 0.01
1242	Medium slow	80	0.170	7 - 9	< 0.01
1244	Slow	80	0.160	2 - 4	< 0.01
1246	Very slow	100	0.200	1 - 3	< 0.01