



FILTER-LAB® Quantitative filter paper

Ref. 1238

Code: PN12380425

Circles of 42,5 mm. diameter

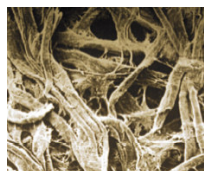
box 100 units.



Filtration catalog: pages 16, 17, 18, 19.

SPECIAL APPLICATIONS

- Filtration of precipitates as $(\text{NH}_4)_3$, $\text{Mg}(\text{NH}_4)\text{PO}_4$, CaC_2O_4 in warm
- Food analysis.
- Recovery of particles in the manufacture of precious metals.
- Determination of the degree of whiteness of the remains of incineration in the paper industry.



TECHNICAL SPECIFICATIONS

Reference	1238
Code	PN12380425
Size	42,5 mm.
Format	Flat disk
Presentation	Box of 100 units
Grammage (EN 536)	80 gr./m ²
Thickness (EN 20534)	0,180 mm.
Content in ashes (DIN 53137)	< 0,01%
Pore	20 - 25 µm
Filtration	Quick
Filtration speed (DIN 53137)	16 - 28 s
Burst resistance (ISO 2758)	> 20 kPa
Composition	Pure cellulose
Type of filter	Depth

Related products



FILTER-LAB® Quantitative filter papers

Made with linters of cotton, they have followed a process of wash to obtain a content in ashes low than 0,01%

Technical specifications

Ref.	Filtration	Weight in grams g/m ²	Thickness mm	Pore µm	Ash %
1235	Very quick	80	0.210	25 - 30	< 0.01
1238	Quick	80	0.180	20 - 25	< 0.01
1240	Medium	80	0.170	14 - 18	< 0.01
1242	Medium slow	80	0.170	7 - 9	< 0.01
1244	Slow	80	0.160	2 - 4	< 0.01
1246	Very slow	100	0.200	1 - 3	< 0.01