



FILTRES ANOIA, S.A

Camí de Baix, s/n
08776 – Sant Pere Riudebitlles (Barcelona)
SPAIN

Tel.: +34.93.899.50.36

Fax.: +34.93.899.71.72

www.fanoia.com

fanoia@fanoia.com

Instruction Manual



The most complete range of the market in filters for laboratory

Filtration
Microfiltration
Ultrafiltration
Specialities
Accessories
Equipments



Vacuum Pump

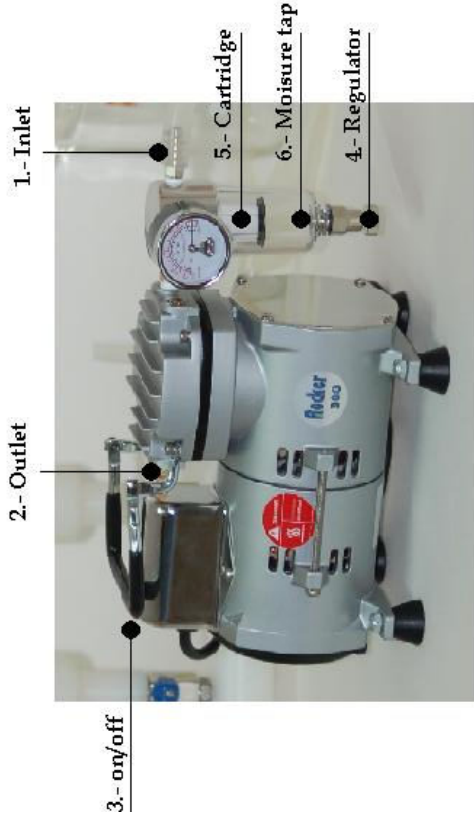
Rocker 300

Index	Description	Quan	Index	Description	Quan
1	Set Screw	4	20	Set Screw	2
2	Plastic Cover	1	21	Paper Pad	1
3	Cooling Fan	1	22	Front Body Lid	1
4	Rear Body	1	23	Set Screw	4
5	Set Screw	2	24	Washer	1
6	Stationary Motor	1	25	Cylinder Block	1
7	Bearing	2	26	Washer	1
8	Rotary Motor	1	27	Cylinder Head	1
9	Front Body	1	28	Set Screw	4
10	Counterweight	1	30	Handle	1
11	Set Screw	1	31	Cable protector	1
12	Bearing	1	33	Condenser	1
14	Compression Ring	1	34	Power Switch	1
15	Lock Plate	1	35	Plug	1
17	Cylinder	2	36	Air Intake Filter	1
18	Valve Plate	2	37	Condenser Protector	1
19	Valve Lock Plate	2	39	Connecting Rod	1

D.- Warning

1. The pump is not corrosion-proof. Please do not operate it with corrosive gases directly
2. When pump is used in water filtration, do not make the liquid level of flask exceed safety level. Failure to comply can result in serious damage to the pump and void the warranty. If it occurs, please contact the distributor immediately for service.
3. The filter cartridge is used to absorb moisture and dust. Please replace the cartridge to maintain proper pumping efficiency when it is saturated.
4. If the pump does not work when restarted during operation, release the vacuum, and turn on again. Otherwise may result in overloading and damaging the motor.
5. This pump has a thermal switch that automatically shuts-off when it becomes overheated or lacks voltage.
6. Do not touch the pump during working or just after use as motor is hot (70-80°C)
7. Do not use any lubricant, which may damage the pump.
8. Use the pump in a dry, clean well-ventilated area.
9. Never spray flammable or toxic materials.
10. If the supply cord is damaged, it must be replaced by the manufacturer or its service agent or a competent person in order to avoid hazard.

E.- Operating



Operating procedure

1. Schematic of the pump system is shown as above
2. Once all of the tubes have been connected, the pumping function is activated by pressing the on/off (3) button.
3. To set up vacuum, adjust the regulator (4).

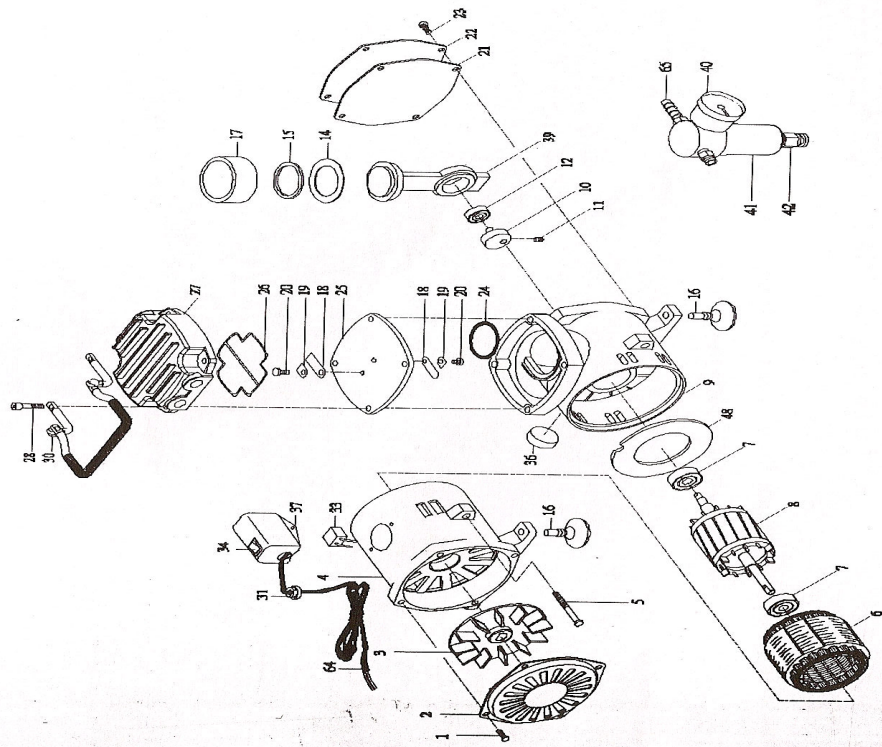


Warning: When the pump is used in water filtration, please be noted, never let the liquid level of the flask exceed the safety level. Failure to comply could result in serious damage to the pump and void the warranty. If it occurs, please, contact the distributor immediately for service.

How to replace the cartridge

1. You are recommended to replace the cartridge when it is exhausted with moisture or particles.
2. First, remove the moisture trap (6) by rotating it counterclockwise. Second, remove the cartridge in the same way, then replace it with a new one.
3. Pour the water out of the moisture trap when it's filled with water

F.- Parts List



A.- Important Notice

This instrument is designed for laboratory usage only.

Before setting up and operating the **Vacuum Pump**, please read these instructions carefully to familiarize with all installation and operation process. Any individual shall be well trained by reading the instructions or by technical people from authorized distributors before operating the instrument.

The instrument shall not be modified or altered in any way. Any modification or alteration will void the warranty, void the regulatory certifications and create potential safety hazard. We are not responsible for any injury or damage caused by using the instrument for any non-intended purpose, or modifying the instrument by any person who is not authorized.

B.- Unpacking

When unpacking, notice if the pump is in good situation. If not, please contact the distributor.

C.- Installation

1. Check voltage specified on name-plate on the bottom. Make sure if it matches the line voltage in your location.
2. Install the instrument in a clean, dust-less and ventilated area under 40°C.
3. To enable suction function, connect the inlet of the pump to the outlet of the objective equipment with a high-pressure hose.
4. Enable pressure function, remove muffler at outlet charge (2), and replace with a hose nipple (167300-43)